

ESF contribution to the Portuguese Social Innovation Initiative

IFISE Project – FINAL CONFERENCE

Brussels, June 2019

Carla Pedro

SETTING-UP THE PORTUGAL SOCIAL INNOVATION INITIATIVE

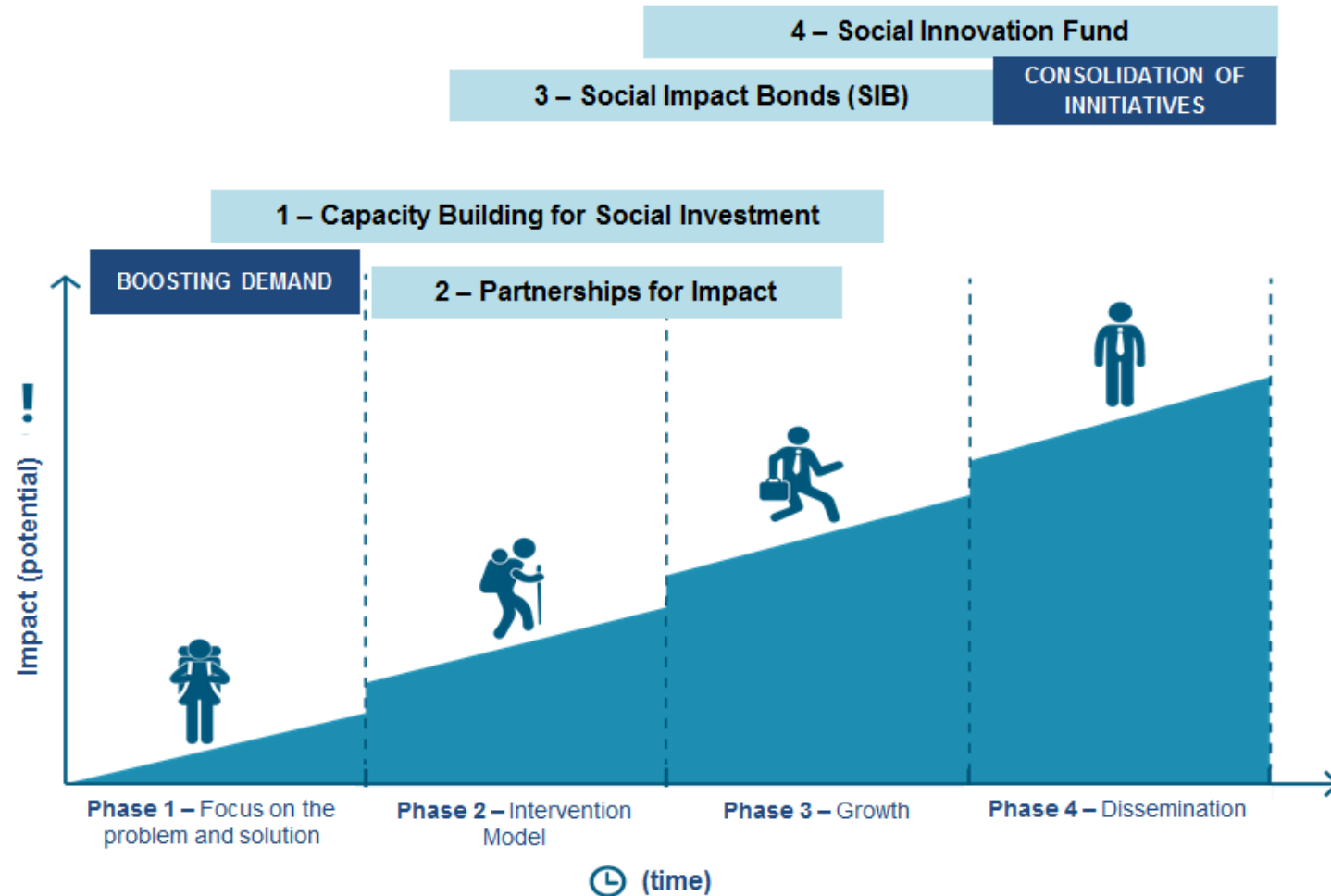
THE CONTEXT

- **The 3-year Economic Adjustment Programme**
(EC/ECB/IMF – PT Government)
Strong austerity measures
Increasing social needs
- **Diverse ecosystem ... and growing**
Traditional players (Cooperatives, Foundations, Mutualities, Associations ,...)
Social Start-ups
Portuguese Social Investment Taskforce
- **2014-2020 PT/COM negotiation process**
... defining priorities for the next 6 years of ESIF financing
Partnership Agreement for Portugal 2014-2020 – PT/COM

SETTING-UP THE PORTUGAL SOCIAL INNOVATION INITIATIVE

WHAT TO FINANCE?

Using the 2014-2020 ESIF negotiations as the window of opportunity to develop a **dedicated funding mechanism ...**



... to finance the **full life-cycle** of social innovation and social entrepreneurship initiatives

SETTING-UP THE PORTUGAL SOCIAL INNOVATION INITIATIVE

HOW TO FINANCE?

FINANCING INSTRUMENTS

TYPE OF ESIF-ESF SUPPORT:

1 - Capacity-Building for Social Investment

Grants provided in the form of lump sums
(simplified cost options)

2 - Partnerships for Impact

70% / 30% matching-fund grants

3 - Social Impact Bonds

“Delayed” outcome-based grants
(with social investors pre-financing each project)

4 - Social Innovation Fund

Financial Instruments
(debt and equity FI)

Innovative ESIF approaches to set-up innovative instruments in an emerging area, for experimenting and testing (*public sector innovation*)

Approx. 150
million EUR
2014-2020

SETTING-UP THE PORTUGAL SOCIAL INNOVATION INITIATIVE

THE RESULTS SO FAR

150 million euros initial budget

AS OF MAY 2019:

- 12 calls launched (*CBSI, PFI, SIBs*)
- Approx. 600 applications submitted (*> 65 million euros demand*)
- + 1 call SIF (*FI set-up, to reach final recipients from 2S2019*)



non-exhaustive

Social innovation and social entrepreneurship projects (being) implemented in diverse areas:

Migrants integration Deprived housing Disabilities Elderly care
Ageing Daltonism School drop-out Youth unemployment Healthy eating Youth civic participation
ICT (*Apps4Good*) Desertification Oral hygiene Youths and children sexual violence
Autism Children social inclusion Integration by music (*prisons*) Dementia Palliative care
Drugs and other addictions Women discrimination

Difficult.... but possible.... and growing

Thank you.

carla.pedro@cmcp-consult.com

IFISE Project – FINAL CONFERENCE

Brussels, June 2019